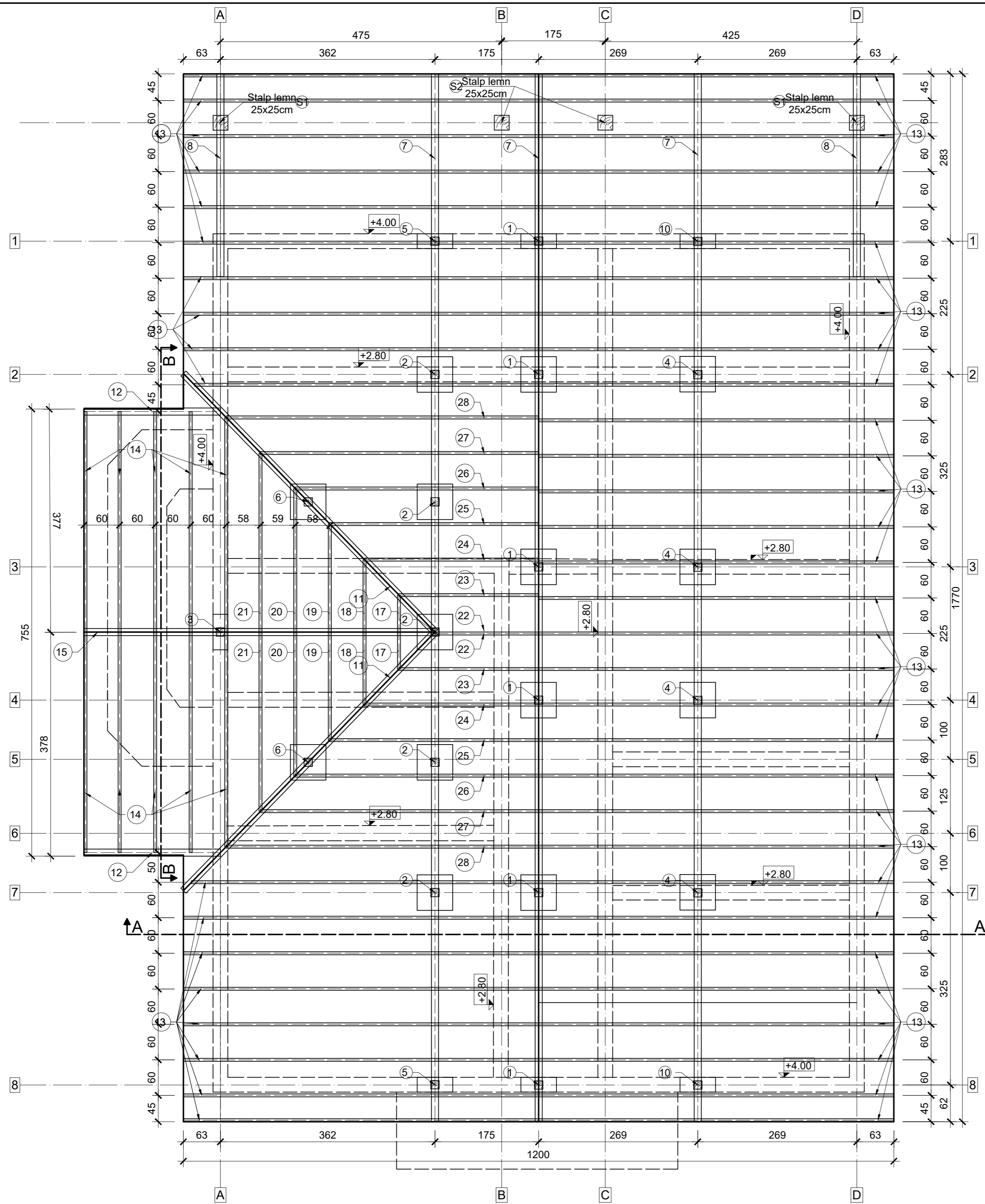


Plan Sarpanta
scara 1:50



EXTRAS LEMN SARPANTA

Poz.	DENUMIRE ELEMENT bxh (cm)	Nr. BUC.	LUNG./BUC. (m)	LUNG. TOTALA (m)	CANT. (mc)
1	Pop 14x14	6	4.00	24	0.470
2	Pop 14x14	5	3.00	15	0.294
3	Pop 14x14	1	1.90	1.9	0.037
4	Pop 14x14	4	2.60	10.4	0.204
5	Pop 14x14	2	1.80	3.6	0.071
6	Pop 14x14	3	1.20	3.6	0.071
7	Pana 12x12	3	17.70	53.1	0.765
8	Pana 12x12	2	17.70	35.4	0.510
9	Cosoroaba 10x8	global	global	42	0.336
10	Pop 14x14	2	1.40	2.8	0.055
11	Pana 12x12	2	7.10	14.2	0.204
12	Pana 12x12	2	2.4	4.8	0.069
13	Caprior 5x12	49	6.75	330.75	1.985
14	Caprior 5x12	10	4.4	44	0.264
15	Pana 12x12	1	5.90	5.9	0.085
16	Traversa 2.8x20	7	6.75	47.25	0.265
17	Caprior 5x12	2	0.65	1.3	0.008
18	Caprior 5x12	2	1.5	3	0.018
19	Caprior 5x12	2	2.2	4.4	0.026
20	Caprior 5x12	2	2.9	5.8	0.035
21	Caprior 5x12	2	3.65	7.3	0.044
22	Caprior 5x12	1	2.05	2.05	0.012
23	Caprior 5x12	1	2.7	2.7	0.016
24	Caprior 5x12	1	3.45	3.45	0.021
25	Caprior 5x12	1	4.05	4.05	0.024
26	Caprior 5x12	1	4.75	4.75	0.029
27	Caprior 5x12	1	5.45	5.45	0.033
28	Caprior 5x12	1	6.1	6.1	0.037
29	Talpa 60x60x5	15	0.6	9	0.270
30	Talpa 60x25x5	6	0.6	3.6	0.045
31	Clestii 2.8x15	7	2.25	15.75	0.066
ASTEREALA(mp)			252.52		
Total (mc)			6.367		

Rezistenta la Foc - grad II, risc mic la incendiu
Clasa de importanta "IV" - constructii de importanta redusa
Categoria de importanta "D" - cladiri de importanta redusa

Verificator/ Expert	ING.				
				BENEFICIAR:	PROIECT NR:
					44/2025
SPECIFICATIE:	NUME:	SEMNTURA:	SCARA:	TITLUL PROIECT:	FAZA:
SEF PROIECT			1:50	CONSTRUIRE LOCUINTA P+M	PT
PROIECTAT	ING. BEJENARU LUIGI-ARMAND		DATA:	TITLUL PLANSEI:	PLANSĂ NR.:
DESENAT			05/2025	PLAN SARPANTA	R11